

### 'Los Reyes Magos' the Spanish celebration

Before Christmas we had a Spanish visitor called Rosa who came to talk to our Year 7 Spanish class about the Day of the Kings in Spain. On the 6th of January, every year, Spanish families celebrate the arrival of 'Los Reyes Magos', the three wise men.

Gaspar, Melchor and Baltasar (the wise men) came to visit the baby Jesus in 'Belén', Bethlehem, and brought gifts of gold, 'oro', frankincense, 'incienso' and myrrh, 'mirra'.



REYES MAGOS

On the 5th of January, in towns and cities all over the country, families crowd the streets to see 'Cabalgata de Reyes', a re-enactment of the arrival of the three kings. In between the actors, musicians and puppeteers the kings ride on camels, 'camello,' or embellished floats and throw 'caramelos', sweets, to the children.

That evening the children leave out their shoes, with a letter to the three los Reyes requesting specific presents. They also leave out 'paja', hay, for the camels and 'galletas', cookies, and 'leche', milk, for the wise men. The next morning, January the 6th, 'día de Reyes Magos', the children are delighted to find the food and hay gone and presents by their shoes.

Another tradition is that on enero de 6, you eat a 'Roscón de Reyes' a delicious round shaped cake decorated with dried fruit, to represent the jewels that are on the crown of the wise men. Inside the cake there is a mini figure of a king and whoever finds it will become 'king' or 'queen' for the meal and will have good luck that year.

**If you are in Spain on January the 5th make sure you spare time to see the Cabalgata and try a Roscón!**

Anna Dewhurst, 7 Devereux



# St Joseph's News

Roman Catholic High School & Sports College

ISSUE 45 – w/c 23<sup>rd</sup> January 2017

Regular Information from the St Joseph's Community

Our theme this week is...

Unity



Our theme this week in school is Unity as we observe the Week of Prayer for Christian Unity.

*The love of Christ compels us (2 Corinthians 5:14-20)*

#### Up & Coming Events:

#### 23<sup>rd</sup> January

- Year 11 GCSE MFL speaking assessment

#### 24<sup>th</sup> January

- Year 11 GCSE MFL speaking assessment

*The reflections and prayers this year have been put together by the German Churches. There are fifty million Christians in Germany who, traditionally, have mostly belonged to the Roman Catholic Church or one of the Protestant State Churches. Recent developments, particularly the reception of refugees and asylum seekers, have begun to change this balance and other Christian traditions are growing. Whilst that which unites the churches is stronger than that which divides, there are still areas of difference in which the churches construct new walls.*

*The text from 2 Corinthians announces that God has, in Christ, reconciled the world to himself. The love of Christ compels us to be ambassadors of this reconciliation, which is enacted by dismantling the walls. With the fall of the Berlin Wall, Germany experienced how a seemingly insurmountable wall could be brought down. The fall of this wall is a symbol of hope that, with the love of God, nothing is impossible.*

*Lord, our God, look upon the walls in our lives that we have built, which separates us from you and from one another.*

*Forgive us our sins and heal us.*

*Help us to overcome all walls of division and make us one in you. Amen.*

*May God give you a new heart and a new spirit*

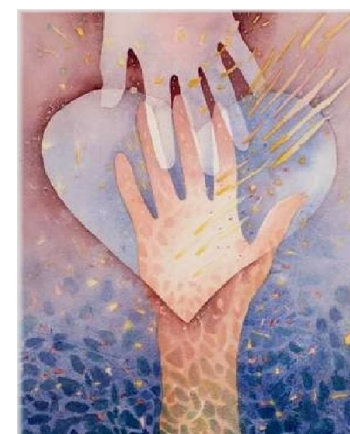
*remove your heart of stone*

*give you a new heart of flesh*

*put a new Spirit within you*

*so that you may walk in God's ways and love.*

*(Based on Ezekiel 36:25-27)*



**ATTENDANCE MATTERS** - The whole school attendance for the week commencing 9<sup>th</sup> January was **93.3%**. Congratulations to **Year 7** and **Mrs Horridge** for achieving the highest attendance percentage out of all year groups and congratulations goes to this weeks' winner, **'Bernadette'** for achieving the highest house attendance. Also, **'well done'** this week again goes to **11 Devereux** for the highest form attendance, 2<sup>nd</sup> week in a row...**99%**! All year groups need to take special note of the attendance summary as research shows low attendance can lead to a drop in GCSE grade. **As we experience colder/wetter/windy weather, can pupils please bring coats to school to avoid getting ill and therefore not attending. Managers of Learning can always send children home if they are too ill to be in school.**

Year	Bernadette	Devereux	King	Kolbe	Romero	Teresa	Vincent	Yr.Average
7	94.1	97.7	97.7	93.7	94.2	95.2		95.4
8	96.3	87.1	88.1	95.7	92.7	87.0		91.1
9	97.3	88.2	90.0	90.8	89.3	95.7		91.8
10	94.0	94.2	92.3	90.4	93.2	93.0	95.0	93.1
11	93.5	99.0	97.6	97.4	87.6	96.2	90.9	94.6
Family Average	95.0	93.2	93.1	93.6	91.4	93.4	92.9	

Attendance	95%	90%	85%	80%
Number of days lost learning in an academic year	9.5	19	28.5	38
Number of lessons lost learning for a 6 period day	57	114	171	228

Is 95% attendance good? This means that your child has still missed nearly 10 school days in one year. Over five years that would be nearly 50 days, this is almost a school term. Research suggests that '17 missed school days a year equals a drop in a grade in GCSE achievement' - DfE

### Year 7 & 8 Girls Football Regional Finals

On Thursday January 12th the Year 7 & 8 Girls Football team represented St Joseph's and Bolton Wanderers FC in the regional finals of the Under 13's English Football League 6-a-side competition, after winning the local stage of the competition in November.

The girls played 4 games, winning 2 and losing 2. We finished 3rd in our group and narrowly missed out on the semi-finals!

The girls played really well against strong opposition and were a credit to the school.

Team: Year 7 - Annabel Edge, Georgia Rushton  
Year 8 - Erin Darwen, Rubie Hoofe, Emma Manley, Erin Odin, Melissa Walker



### Year 7 Basketball

The Year 7 Basketball team played on Wednesday 18<sup>th</sup> January but were beaten by Westhoughton High 18 - 6.

The pupils played exceptionally well and some of the pupils made their debut for the school team.

Their next fixture will be next week against Mount St Josephs.



### Bolton Music Service – New Year message for all parents

Invitation Week (18th January - 25th January) - all children learning a musical instrument or voice will be invited to join the Bolton bands, choirs and orchestras.

Look out for your child's special invitation letter to Bolton Music Centre - we will tell you which ensemble is most suited to your child.

This is a great opportunity on your doorstep - we look forward to welcoming you and your child to Bolton Music Centre.

It is well-known that learning music helps boost your child's ability to learn new things. If you want to know more click the link below:

[https://www.musicmark.org.uk/wp-content/uploads/10\\_things\\_booklet.pdf](https://www.musicmark.org.uk/wp-content/uploads/10_things_booklet.pdf)

If you do not receive your special invitation please call our office on 01204 333533 to find out more.

You can also visit our website at <http://gmmusichub.co.uk/bolton> to download our brochure.



### PSA

Thank you to staff, parents and pupils who helped out at the Christmas Fair. Without continued support from the school community the PSA would not be able to plan events to raise funds.

We are pleased to inform you that we raised an amazing total of over £3000 which will help provide essential resources for the pupils in the school. With the funds raised some of the resources we are able to provide include:

- Subsidising the costs for some pupils to attend Savio House, Bollington (Years 8, 9, 10, 11)
- Book Quiz and books, Classic Literature and Fictional Religious related theme books
- Curricular & Extra-Curricular provision - football kits for girls football squad, table tennis tables, badminton rackets and shuttles
- Careers Event with 2ENGAGE for Year 9
- Purchases through the reward system for pupils
- Launch of a Year 7 Choir through a day with POPUK
- Respect day Years 8, 9, 10 with external speakers
- Chef jackets for GCSE pupils and pasta machine
- Funding for vulnerable pupils/families within the pastoral care team
- A Bernina overlocker
- Transportation costs to an educational institution

We welcome members of the School community to get involved with the PSA.

Thank you for all your support.

PSA Committee

